



SMART BEE BOX

SmartBeeBox

Model T For different size of Materials

- Less Labor
- Cost Saving
- Auto-generate Report

smartbeebox.com

SHENZHEN DANFOO TECHNOLOGY CO.LTD





CONTENTS

01

About Us

02

Value & Highlights

03

Outstanding Design

04

Case Study

05

Specification

06

Service Commitments



About Us

Company Introduction

Shenzhen Danfoo Technology Co., Ltd. was established in 2015 and is a technology-based enterprise focusing on digital solutions for the machining industry.

Headquartered in Shenzhen, with subsidiaries in Suzhou and offices in Ningbo, Qingdao, Zhengzhou, Xi'an, Xiamen, Weihai and Quanzhou. The company currently has over a hundred employees, with R&D personnel accounting for over 50%.

Smart Cabinet- Digital management of cutting tools, measure tools, and materials, reducing labor, cost, and trouble;
Machinery Cloud- Digitalizes your CNC Machines, improves factory productivity.

Smart Bee MES- ERP+MES that fully fits the characteristics of machining management, covering the entire management process from order to shipment.

150+
Listed
Companies

4000+
Enterprises
Served

100+
Intellectual
Properties

100+
team

Cross(IT + Machinery) Team with high innovation



Liang Yi

Operation Director

Huawei supply chain expert(10 years)
Huawei(Brasil) ERP launching team head



Wang XueJun

Solution Director

Tsinghua Univ. Bachelor
Chief Engineer of Dahe Machine
VP of LG MAZAK
30 years machinery industry experience



Chen Yan

GM, Product manager, Sales director

Jilin Univ. Bachelor
Tsinghua Univ. Master
Huawei product manager
12 years sales experience
IT+ Machinery background



Huang Hua

R&D Director

Former Huawei R&D manager(7 years)
heading development team of 100+ people in Huawei



Zhao JingLong

VGM, Product manager

Tsinghua Univ. Bachelor
Paris Institute of Technology Master
TUS HOLDING product manager
6 years SME solution design experience



Value & Highlights

SmartBeeBox Model T

Designed for machining plants to manage tools/consumables

24-hour unattended

Quick borrow and Clear records

Tool positioning and Tracing

One click export of statistical reports



Less Labor-- SmartBeeBox Model T

24-hour unattended

The workload of Administrator can be reduced by more than 60%, which originally required three people to complete, reduce to 1 person.



Less labor-- SmartBeeBox Model T

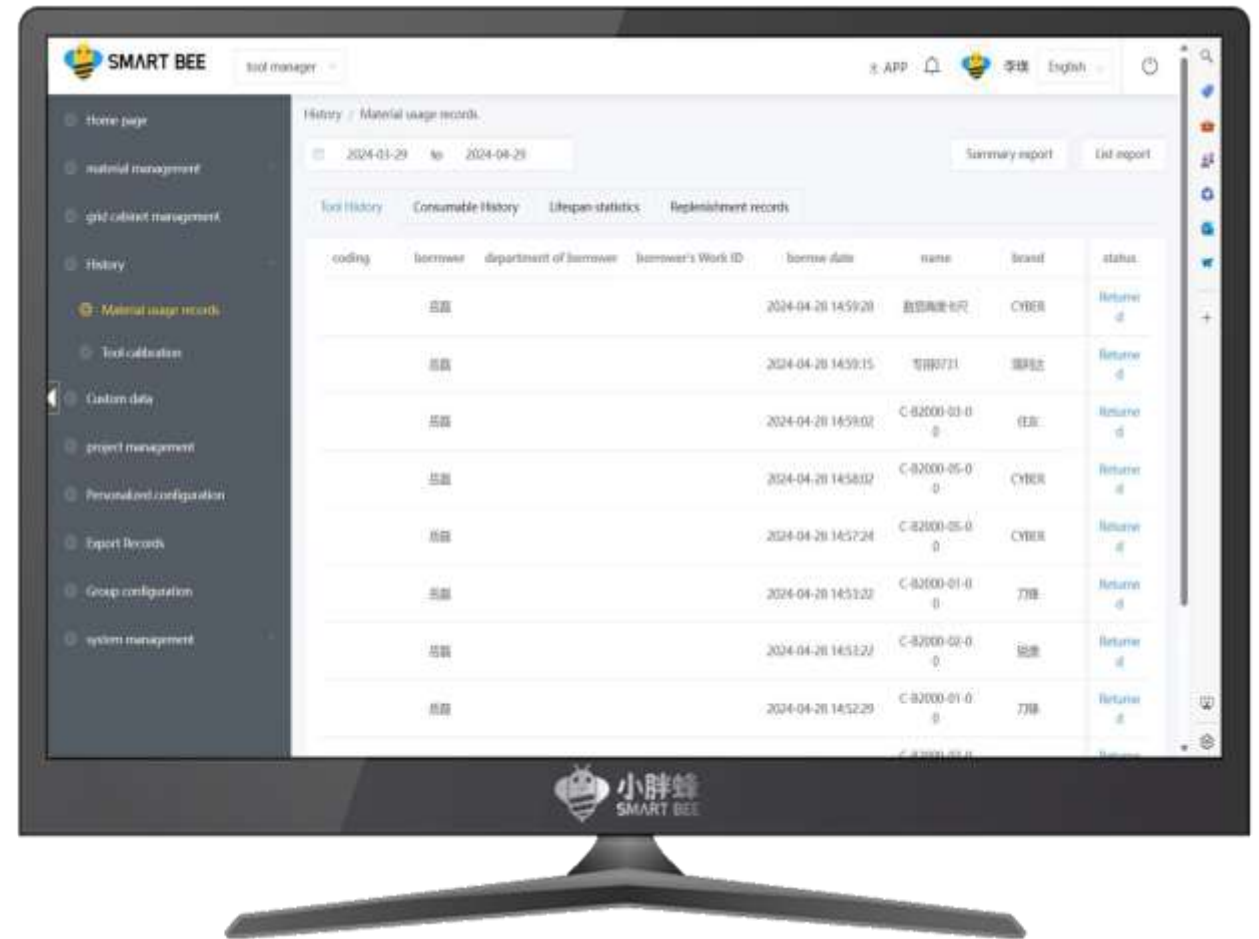
Quick borrow and Clear records

Traditional management:

- Writing takes 30 seconds per time;
- Frequent manual record is troublesome, records are missing sometime, sizes mismatched happens.

SmartBeeBox Model T:

- Tool borrow and return complete in 5 seconds, with automatic statistics and records;
- Automatic recording, traceable query of the corresponding tool requisition
- Real time generation of borrow and return information, searchable and not subject to human modification



Less Labor-- SmartBeeBox Model T

Tool positioning and Tracing

Traditional management:

- Inventory accounting is time-consuming and laborious;
- Handwritten records are difficult to find the tools when stored in multiple locations. Chaotic storage, frequent errors in inventory, and discrepancies between records and reality;
- The workshop is filled with stagnant tools, which is difficult to clean and cannot be traced. It is also unclear how long it has been stored.

SmartBeeBox Model T :

- One grid, one type of tool, each tool is safe, easy accounting;
- Real time updates of records and in-place inventory, 100% accurate;
- Quickly locate borrowed tools and materials, trace them back to the responsible person, make the factory cleaner, and easily achieve 5S management



Auto-report-- SmartBeeBox Model T

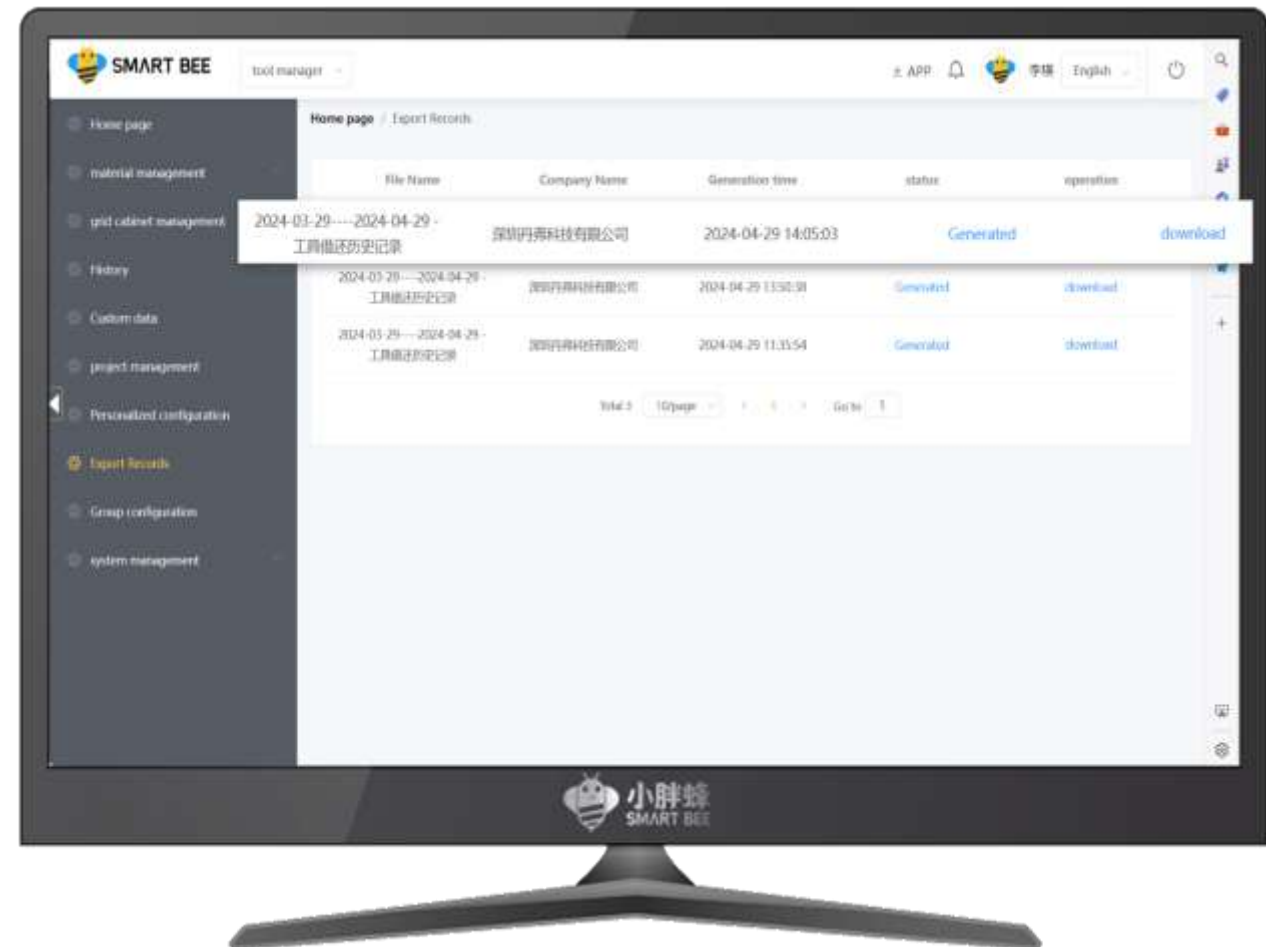
One click export cost report

Traditional management:

- The monthly statistical report takes a long time, the data is inaccurate, and data is delayed;
- Manual record and Excel search was time-consuming and laborious.

SmartBeeBox Model T :

- Automatically generate reports, making procurement, verification, and scrap costs clear at a glance;
- Significantly improved borrow efficiency and reduced report generation time.



Save Cost-- SmartBeeBox Model T

- ✓ Save labor costs
- ✓ No tool loss and reduce factory management costs

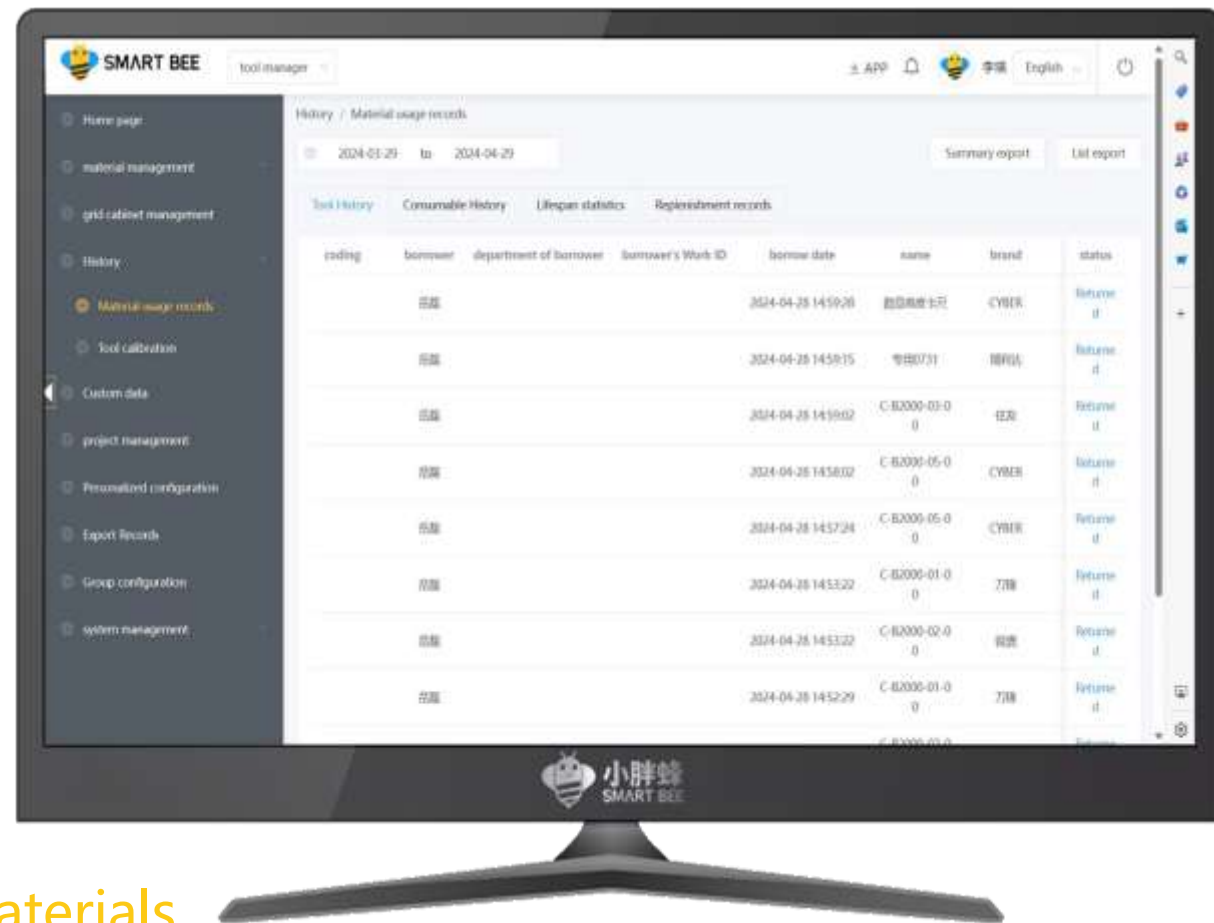
Traditional management:

- Forgetting to return, difficult to trace, often lost;
- Tools missing in each accounting, with losses ranging from 50,000 to 100,000 CNY

SmartBeeBox Model T :

- Borrow&Return records are traceable, and the abnormal loss rate of tools is as low as 0;
- Record detailed time, personnel, and other binding content to prevent disputes;
- Can set reminders for overdue borrowing to improve tool utilization

- ✓ Achieve refined management of tools and materials, reduce capital occupation



Features

Scanner inbuilt

Easy replenishment of tools/consumables, making it convenient for administrators to quickly replenish materials.

With a gentle scan, batches of materials can be placed in the cabinet.



Features

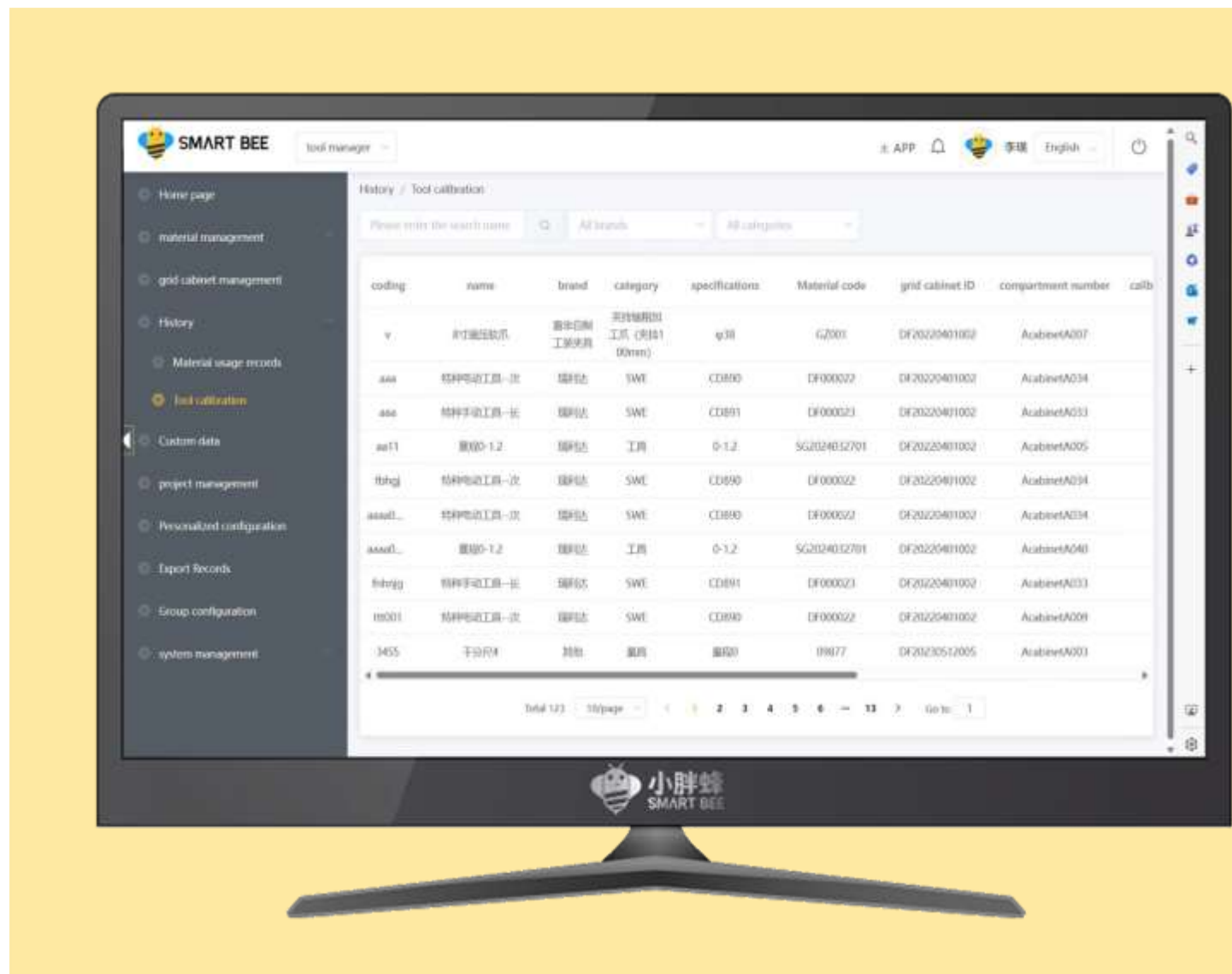
Automatic reminder of calibration

Traditional management:

A large quantity of tools, difficult to maintain, easily forget to do the calibration. Then expired usage causes quality risks.

SmartBeeBox Model T :

Can filter and query pending calibration lists or abnormal pending calibration lists for calibration of tools



Features

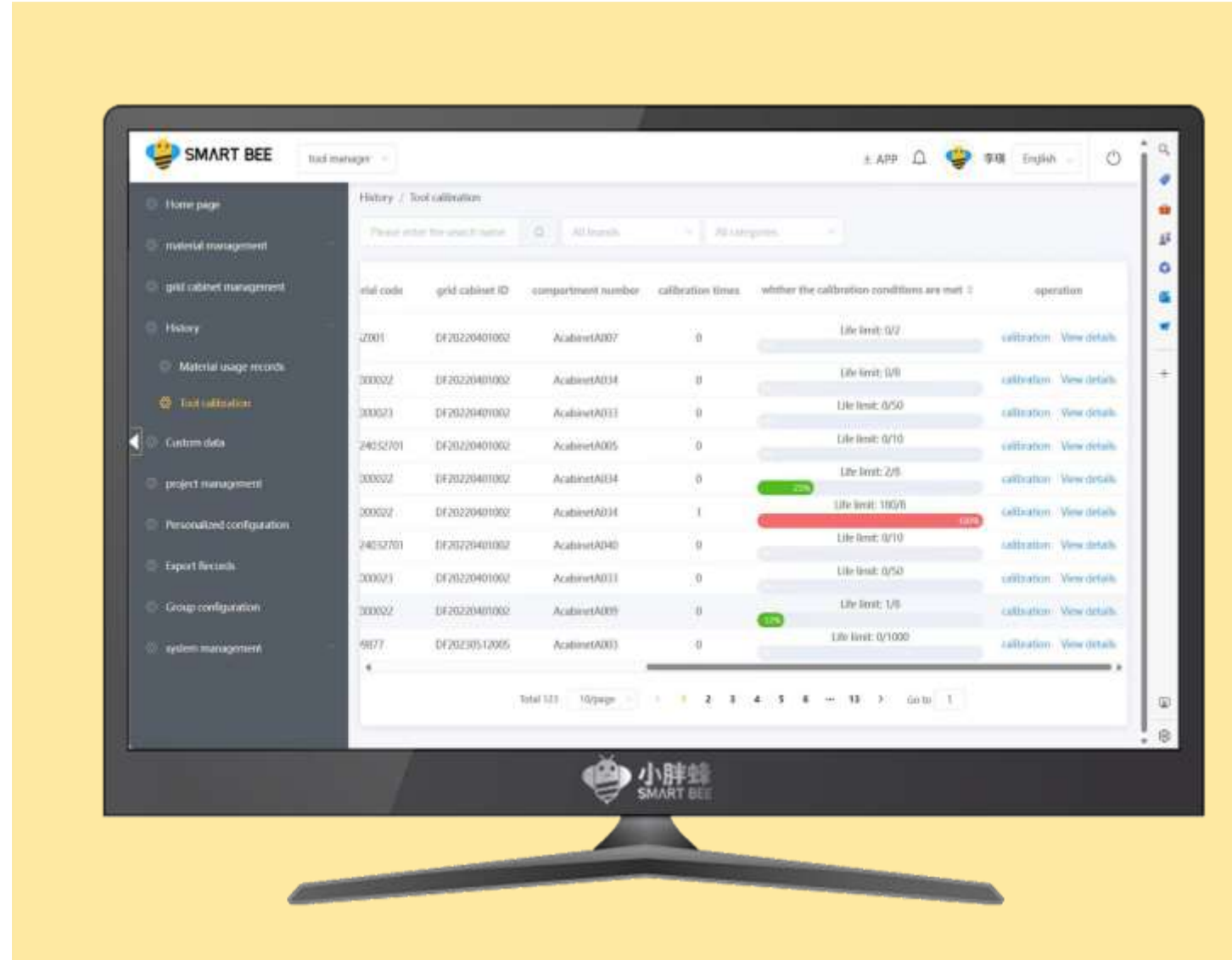
Mold/Tool Life Management

Traditional management:

How many times the mold/tool has been used and how many times it can still be used, manual recording cannot achieve accurate statistics

SmartBeeBox Model T :

The system accurately records, automatically accumulates, and achieves the detection of mold and tool usage times and lifespan





Outstanding Design

Outstanding Design

Master Designed

Designer : Liu Yang

Industrial Design Dept. Tsinghua Univ.

Worked in LG、GALANZ、TCL

Awarded :

DDF Top 10,iF Industrie Forum

Design,Reddot,GoldenPin Design Award





Case Study

客户案例



200+

Sell to cities

100+

Contract with listed companies

4000+

Serve machining enterprises

Common Choice for Listed Companies and Leading Companies





Benchmark cases

Mechanical equipment

Foshan Yongyoute Precision Machinery Co., Ltd

Foshan Yongyoute Precision Machinery Co., Ltd. is a comprehensive enterprise specializing in the production of PET bottle preform injection molding systems and blow molding systems. Its products include PET bottle preform injection molding machines, injection molding molds, bottle cap molds, and blow molding molds



Since different borrow permissions were set for each employee, the phenomenon of unauthorized borrow has decreased significantly.

—Workshop supervisor Zhu

Yongyoute: How to manage valuable consumables well?

Customer Pain Points

- The warehouse keeper manually records borrow, but the borrow data is inaccurate, making it difficult to conduct monthly inventory statistics;
- Staffs repeatedly borrow and over borrow tools, this is severe waste of tools, and hard to supervise;
- Valuable consumables such as thermocouples, titanium alloys, and injection nozzles are frequently used and managed and distributed by the warehouse keeper. The workload of the warehouse keeper is large and cumbersome

Smart Bee Solution

- 24-hour unattended, allowing stuffs to use and borrow at any time, saving management costs;
- Set up tool borrow permissions for each employee and strictly control the quantity and type of materials they borrow;
- The employee borrow data system automatically records and provides accurate and visible data, making monthly and annual inventory easy to handle

Values

- 24-hour unattended, warehouse keepers do not need to spend special effort to manage the distribution of materials;
- Automatically record borrowing data, clear to see the material usage in workshops;
- One click export of report greatly improves the efficiency of warehouse keepers;
- Employees borrow tools according to demand and their behavior is standardized.

Benchmark cases

Mechanical equipment

Ningbo Tianrui Compressor Parts Co., Ltd

Ningbo Tianrui Compressor Accessories Co., Ltd. is an enterprise specializing in the production and processing of refrigeration compressor connecting rods, pistons, heat exchange, and refrigeration and air conditioning equipment. Its production characteristics are small batches and multiple types. Therefore, the workshop stores many molds, which are small and numerous, making management difficult



With this tool cabinet, you no longer have to worry about the mold not being found and affecting production.

—Mr. Cheng,
the warehouse keeper

Tianrui: How to efficiently manage various types of small molds?

Customer Pain Points

- There are various types and small volumes of molds, and the warehouse storage is disorderly. The warehouse keeper's daily inventory is time-consuming and laborious, and they are unable to know the actual inventory of each mold in a timely manner;
- Employees frequently borrow and replace molds, and it takes some time to borrow the corresponding molds each time;
- The storage of molds used in sets is not standardized, often scattered, and it is difficult to obtain matching ones

Smart Bee Solution




- According to the workshop mold usage, it is equipped with 2 SmartBeeBox with a total of 180 compartments, to place and manage all molds;
- The backend system automatically records the usage of various molds and views their inventory in real-time;
- Staffs can borrow and return molds on their own in just 30 seconds;
- Unified cabinet management for complete sets of molds, with employees borrowing one set at a time

Values

- All molds are unified; Stored in the SmartBeeBox, the mold management is neat and orderly;
- Staffs self-service borrow of molds, convenient and fast;
- Without the need for warehouse keepers to manage inventory, real-time inventory of various molds can be viewed in the system, effectively improved management efficiency and saved labor costs.



Specification

Model	T108	T100	T57
Appearance			
Specifications	<ul style="list-style-type: none"> • Overall dimensions (H * W * D): 2000*1450*500(mm) • Capacity : 108 grids • Net size of single grids(H*W*D): 120*120*400(mm) • Bearing for single grids≤10kg • Net Weight:370KG(Around) Weight with package: 420KG(Around) 	<ul style="list-style-type: none"> • Overall dimensions (H * W * D): 2000*1544*500(mm) • Capacity : 100 grids • Net size of 96 grids(H*W*D): 91*152*400(mm) • Size of 4 grids(H*W*D): 228*339*400(mm) • Net Weight:405KG(Around) Weight with package: 455KG(Around) 	<ul style="list-style-type: none"> • Overall dimensions (H * W * D): 2000*1596*500(mm) • Capacity : 57 grids • Net size of 54 grids(H*W*D): 132.5*223*400(mm) • Size of 3 grids(H*W*D): 182.5*481*400(mm) • Net Weight:325KG(Around) Weight with package:375KG(Around)



Service Commitments

Service commitments

01

Continuous software upgrades

User feedback driven software development

By OTA or by providing upgrade packages

Provide users with richer and more enjoyable features

Software Upgrades

02

Provide software and hardware services to customers together with local agents

One year warranty

Technical support from Smart Bee

Lasting Service



Thanks!

Looking forward to serve you



Official Website

Shenzhen Danfoo Technology. Ltd.

CONTACT US

 mkt@danfoo.com

 smartbeebox.com

 Room 903, Skyworth Digital Building, Shiyan street, Bao'an District, Shenzhen, Guangdong

