

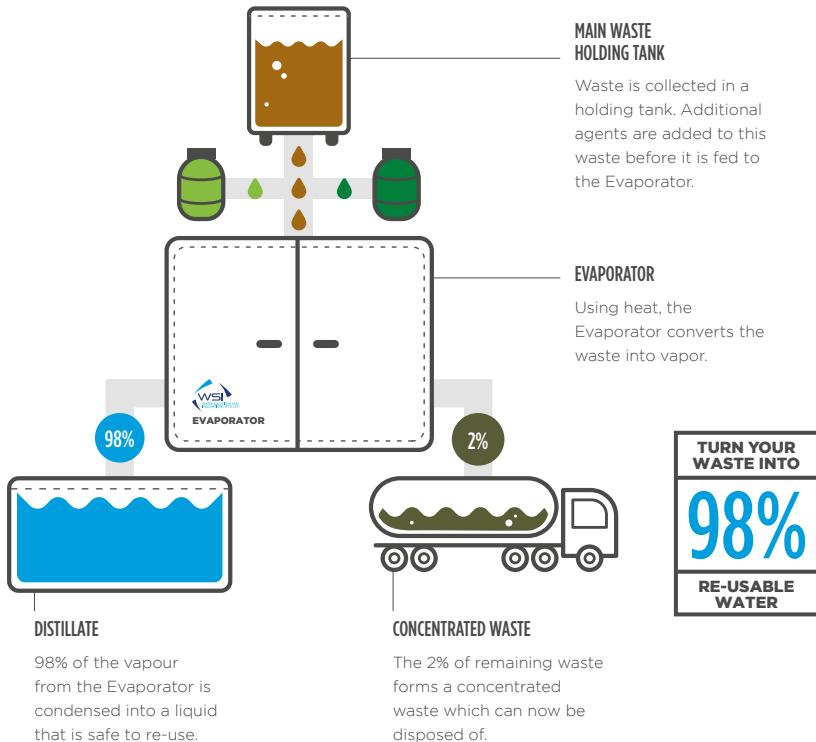
Evaporator

YOUR SOLUTION TO A GREENER WORLD



Process overview

The WSI Evaporator range is specifically designed to treat industrial effluent. The Evaporator operates by removing up to 98% of the water component from the incoming waste stream thereby reducing industrial effluent by up to 98%.



MAIN WASTE HOLDING TANK

Waste is collected in a holding tank. Additional agents are added to this waste before it is fed to the Evaporator.

EVAPORATOR

Using heat, the Evaporator converts the waste into vapor.

98%

2%

DISTILLATE

98% of the vapour from the Evaporator is condensed into a liquid that is safe to re-use.

CONCENTRATED WASTE

The 2% of remaining waste forms a concentrated waste which can now be disposed of.

TURN YOUR WASTE INTO
98%
RE-USABLE WATER



SAVING TIME & MONEY

Turn 98% of your total waste into re-usable water, while only having to dispose 2%.

Operating Principal

The Evaporator is a forced circulation mechanical vapor compression evaporator. The system utilizes a specialized vacuum pump to create the perfect environment for water to evaporate within the boiler chamber. The vapor generated is condensed into clean distillate which is cooled and discharged from the system.

This specific evaporation technique uses up to 90% less energy than conventional evaporation. This is largely due to the steam condenser and the unique design of the EVA evaporator.

Technical Specifications

Model	WSI - E200
Capacity per year (m ³)	1540
Installed power (kW)	43
Dimensions (L x W x H) (mm)	2200 x 1250 x 2000
Dry weight (kg)	1730
Power consumption (kWh/l)	0,1

*Specifications may vary due to added features and operating environment.

**Details on other models will be supplied upon request.

Evaporator features

- 10.4" Operator interface
- Minimal labor required
- Antifoam system
- Auto cleaning cycle
- Auto pH correction
- Distillate quality monitoring system

Optional Extras

WSI offers the following optional extras:

- Pre-filtration
- Coalescing unit

Viabile effluent types

- Washing fluids
- Rinse fluids
- Emulsified oils

*Other effluent types may require external pre-treatment facilities.

www.wsi-africa.co.za

☎ +27 41 585 5578 | 📠 +27 41 463 0095 | ✉ info@wsi-africa.co.za
📍 35 Kurland Street, Perseverance, Eastern Cape 6220, South Africa